



UZ
LEUVEN



Manama course in Clinical Genetics - day 6

Preconception Genetics, PGD, Reproductive Genetics

Eftychia Dimitriadou, PhD
Reproductive Genetics Unit
eftychia.dimitriadou@uzleuven.be

March 7th 2023

UZ
Leuven

Herestraat 49
B - 3000 Leuven

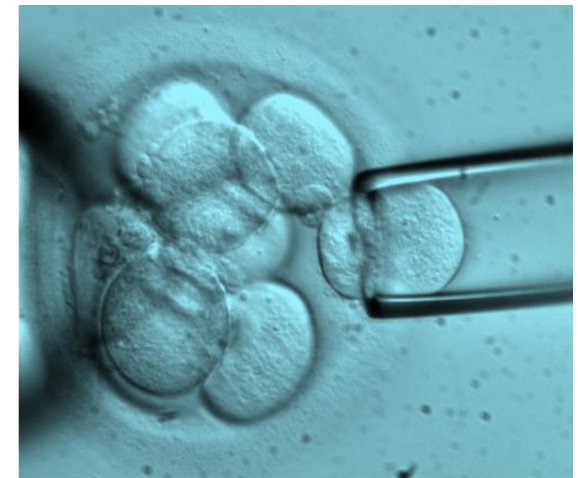
www.uzleuven.be
tel. +32 16 33 22 11

UNIVERSITY HOSPITALS LEUVEN

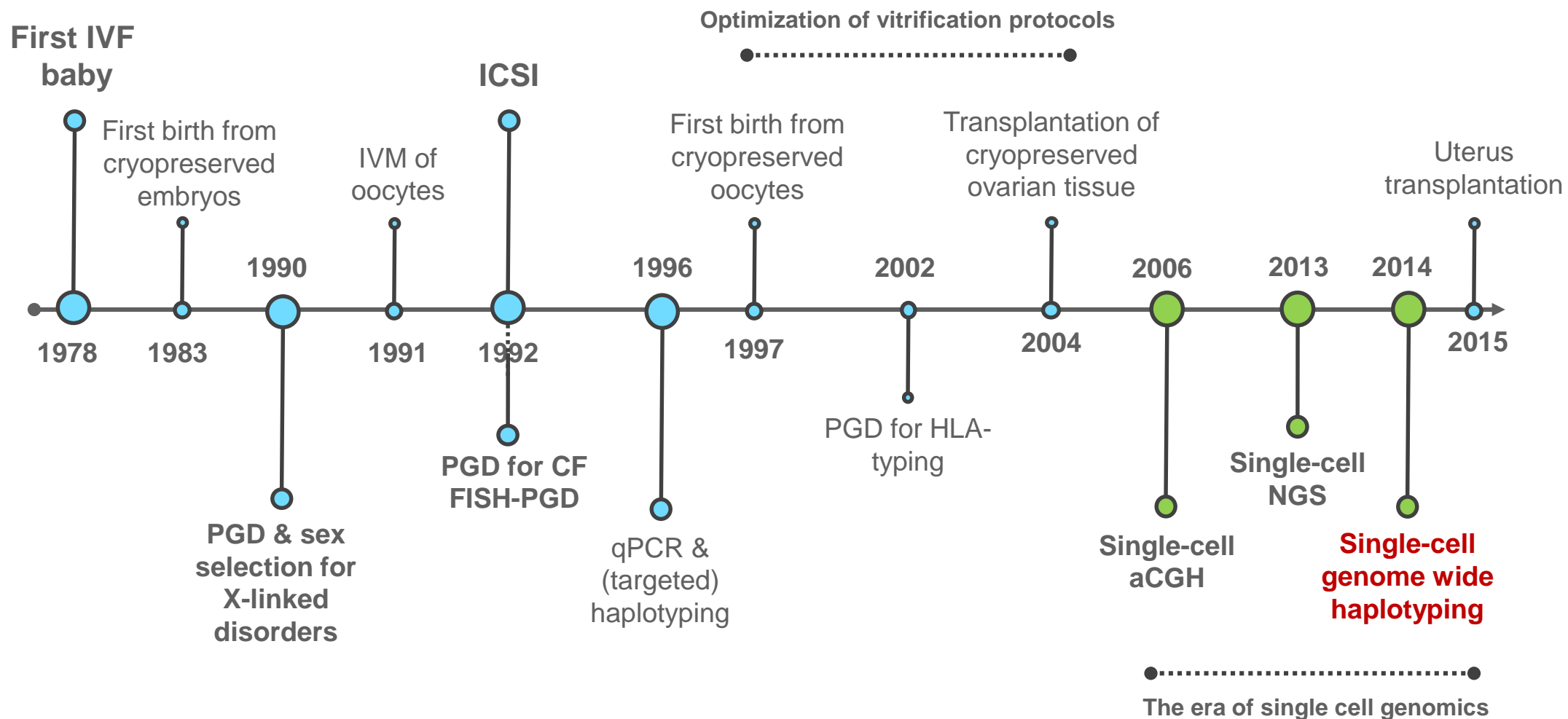
Pre-implantation genetic testing

PGT

- **Aim of PGT:** detection of genetic abnormalities in embryos before they are transferred to the uterus
- MAR (mostly ICSI) required
 - Embryo biopsy (D3 or D5/6)
 - Genetic analysis
 - Transfer of unaffected embryos



40+ years of assisted reproduction



Types of PGT based on indication

- **PGT-SR** PGT for chromosomal structural rearrangements
- **PGT-M** PGT for monogenic disorders
- **PGT-A** PGT for aneuploidy
- **Coprehensive/Universal PGT** PGT-M/SR+A



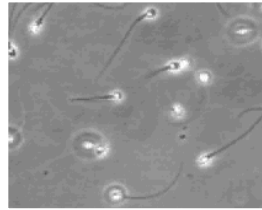
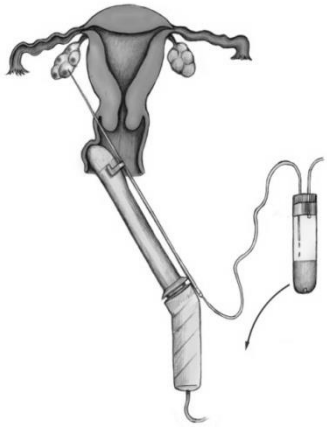
PREIMPLANTATION GENETIC DIAGNOSIS INTERNATIONAL SOCIETY

<https://pgdis.org/>



European Society of **Human Reproduction and Embryology**

<https://www.eshre.eu/>



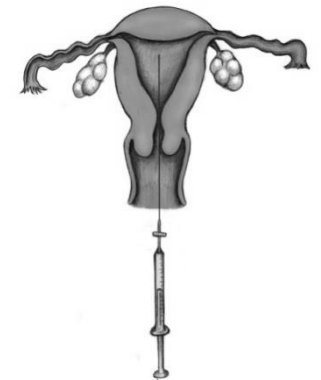
gametes



IVF/ICSI



Cryopreservation



Embryo transfer

Day 1



Day 2



Day 3



Day 4



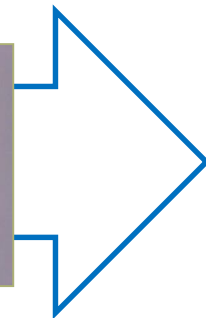
Day 5



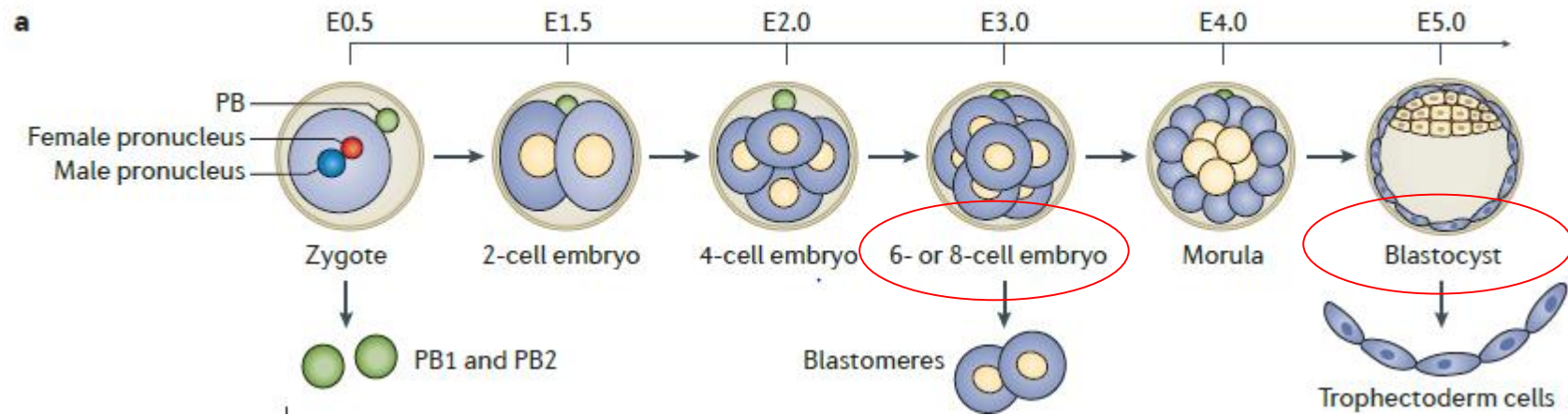
Day 5/6



Embryo development and evaluation



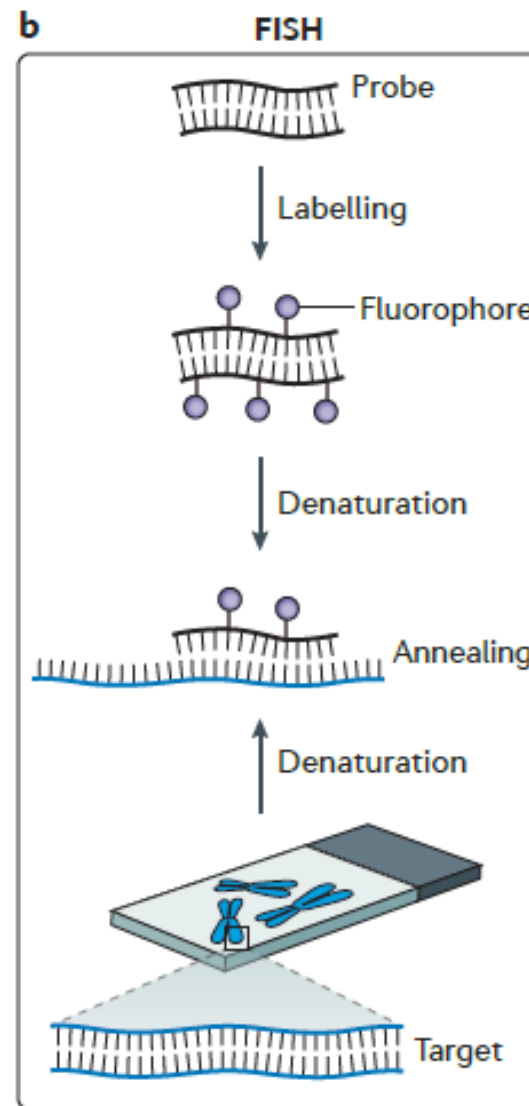
Timing of embryo biopsy



Techniques

- FISH
- PCR-based
- Array CGH
- Low-pass short read sequencing (GW)
- SNP array-based
- Reduced genome representation -
Genotyping by sequencing

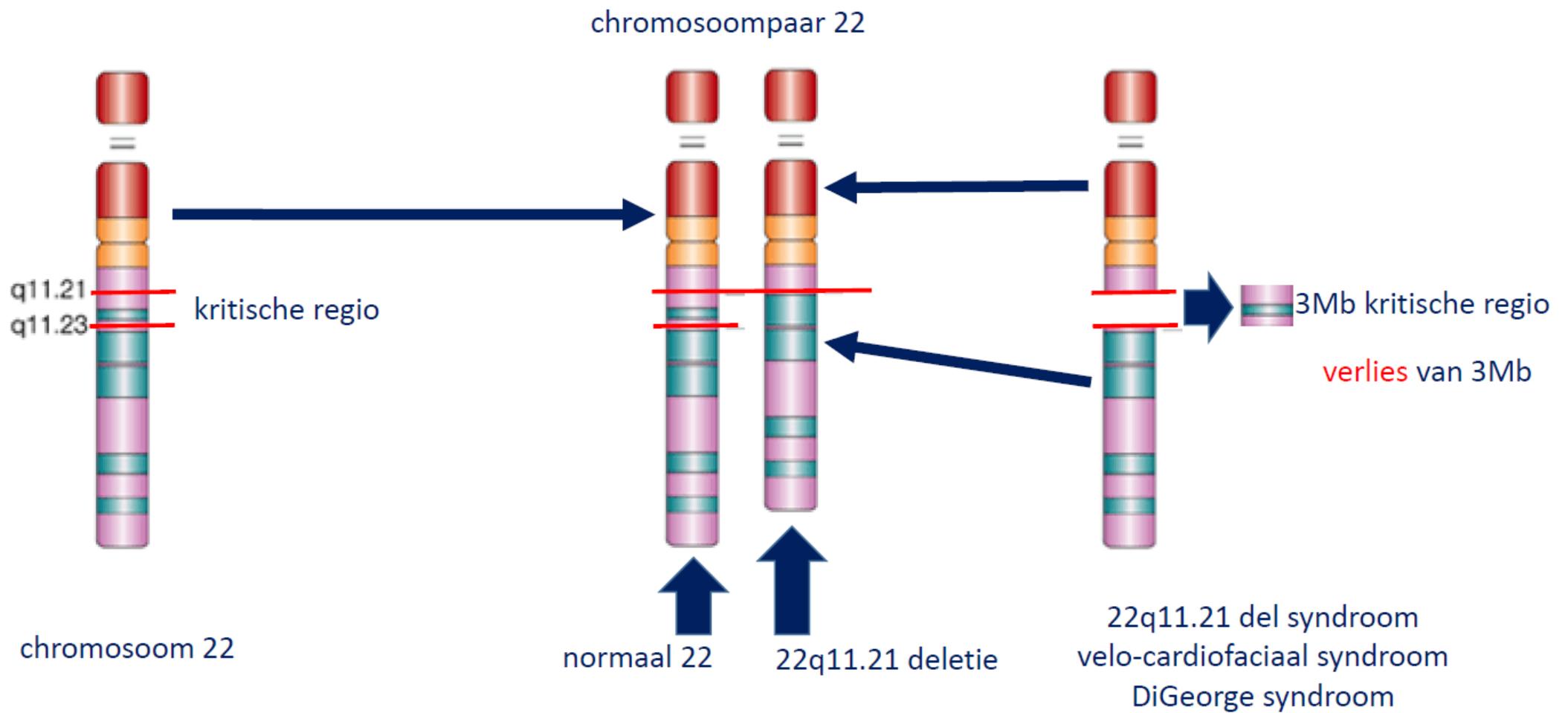
FISH



PGT via FISH: indications

- Sex selection (X-linked or Y-linked disorders)
- Microdeletions
- Translocations

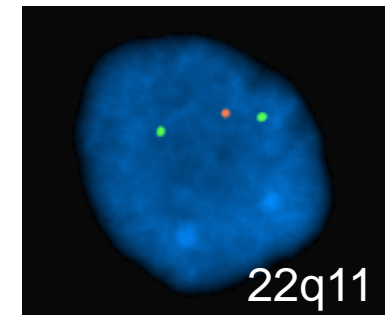
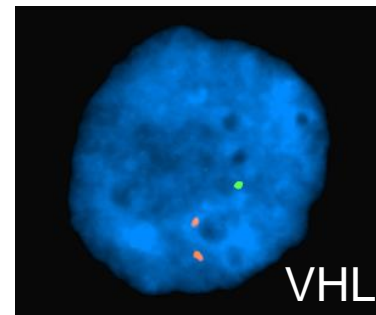
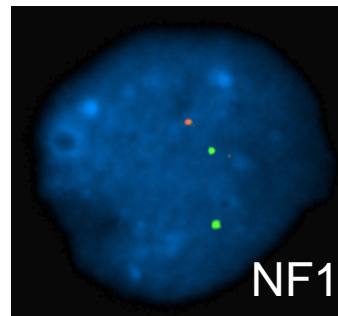
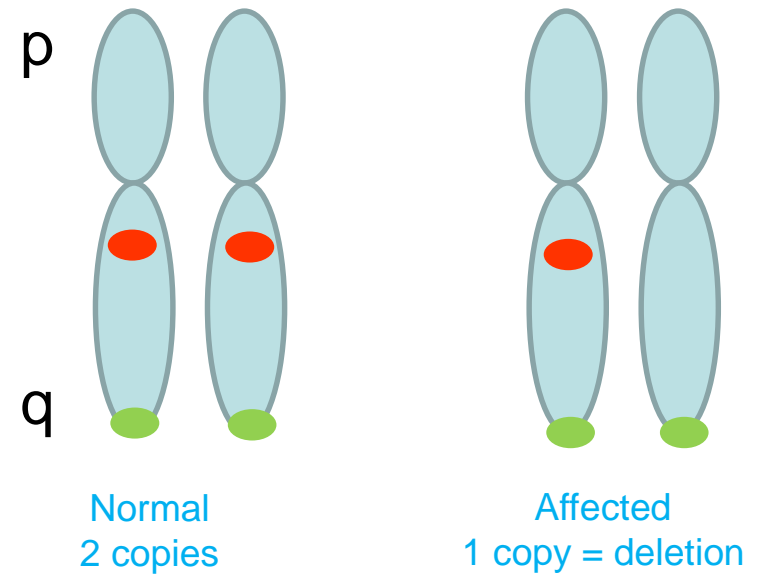
microdeletion



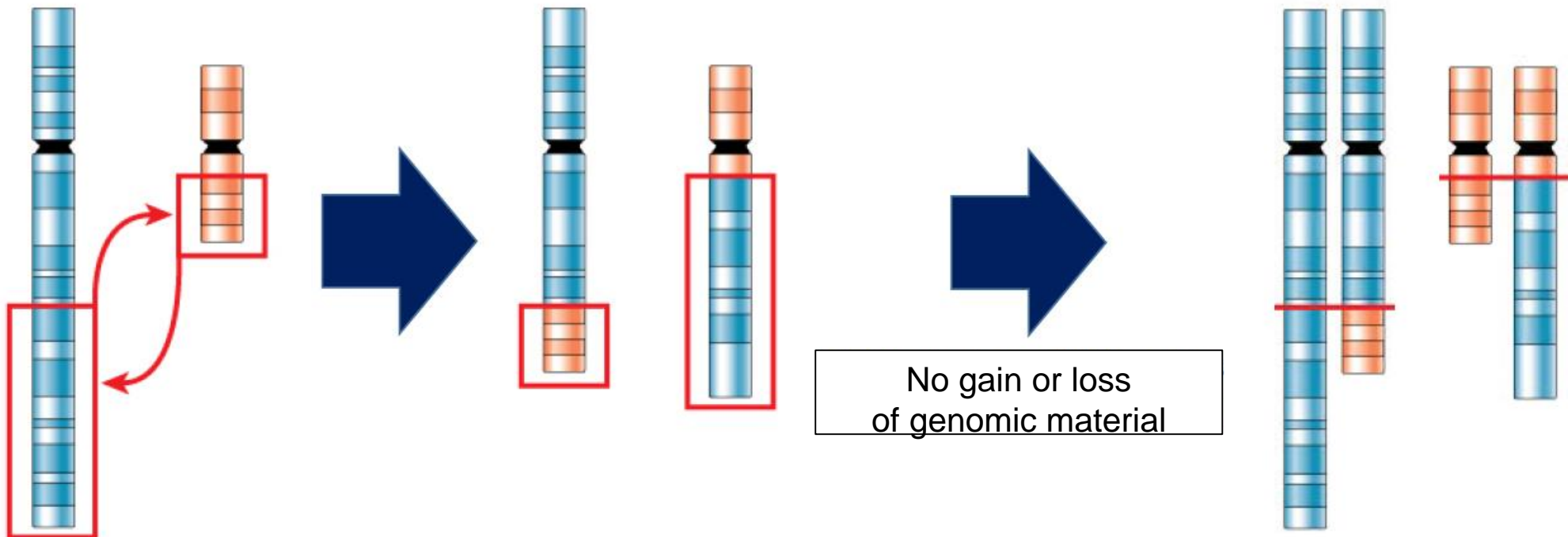
PGT via FISH voor **microdeletion** syndromes



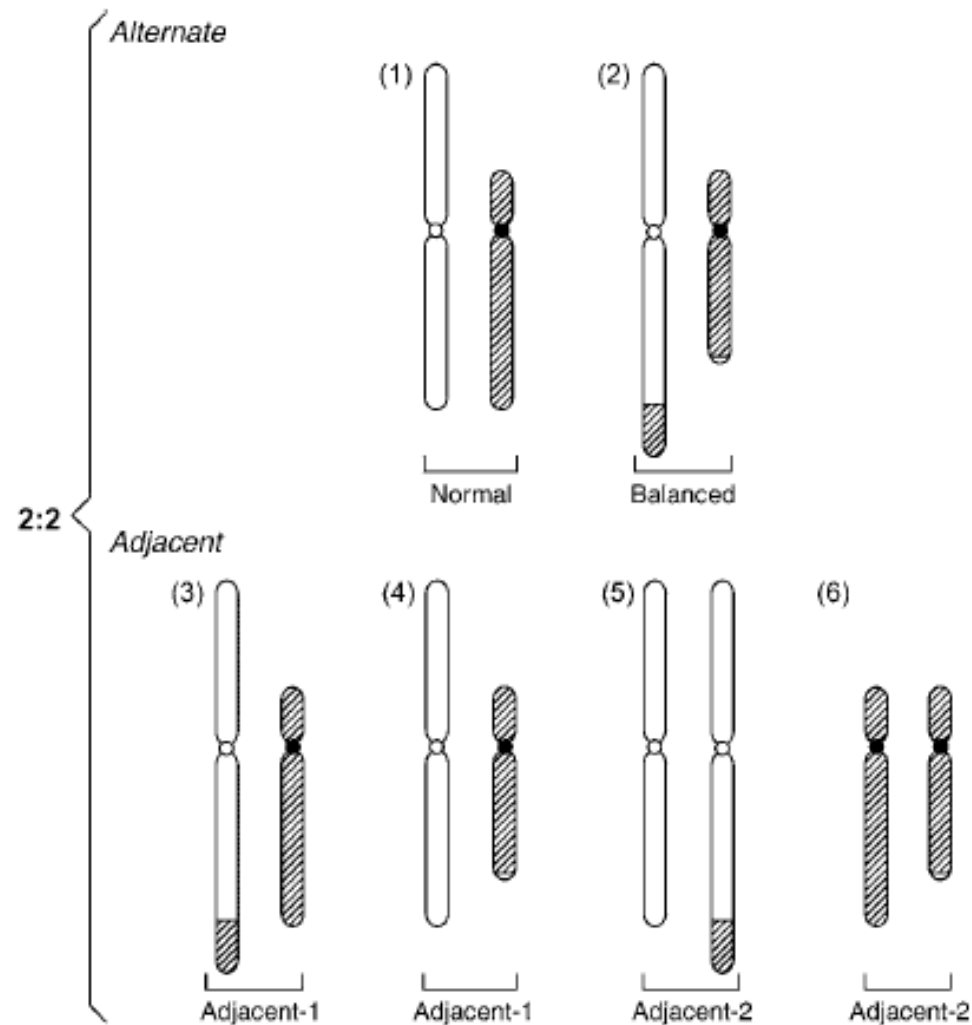
NF1 gene
17q11



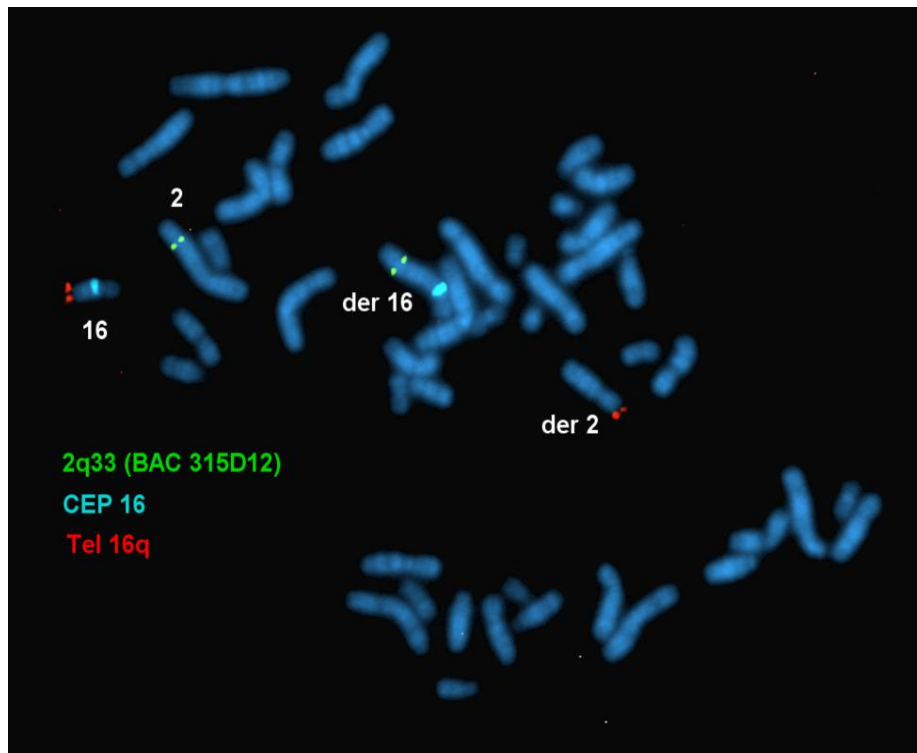
Reciprocal translocation



The full range of segregant gametes

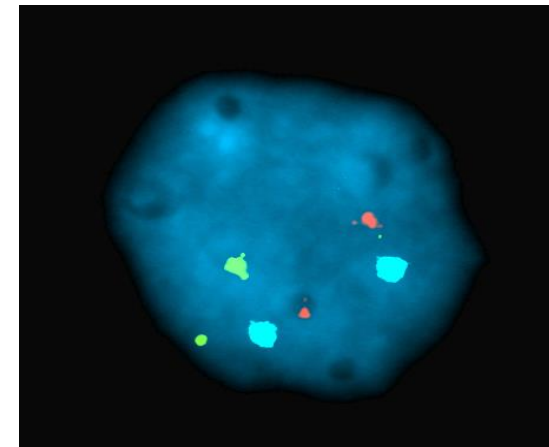


PGT via FISH for **reciprocal translocations**

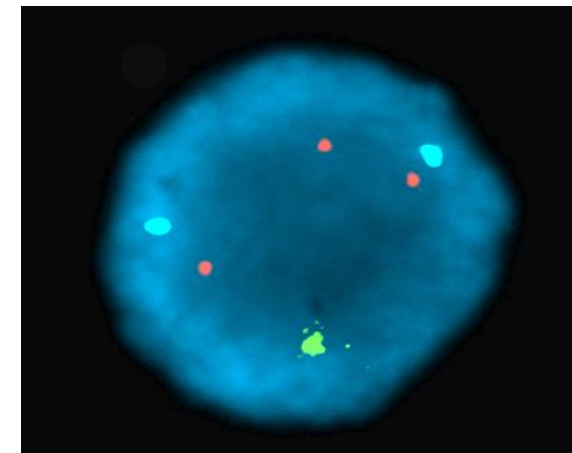


Pre-PGT: bloodsample of the prospective parents:

- Detection of the balanced translocation (2q; 16q)
- Optimisation of FISH probe combination for PGT

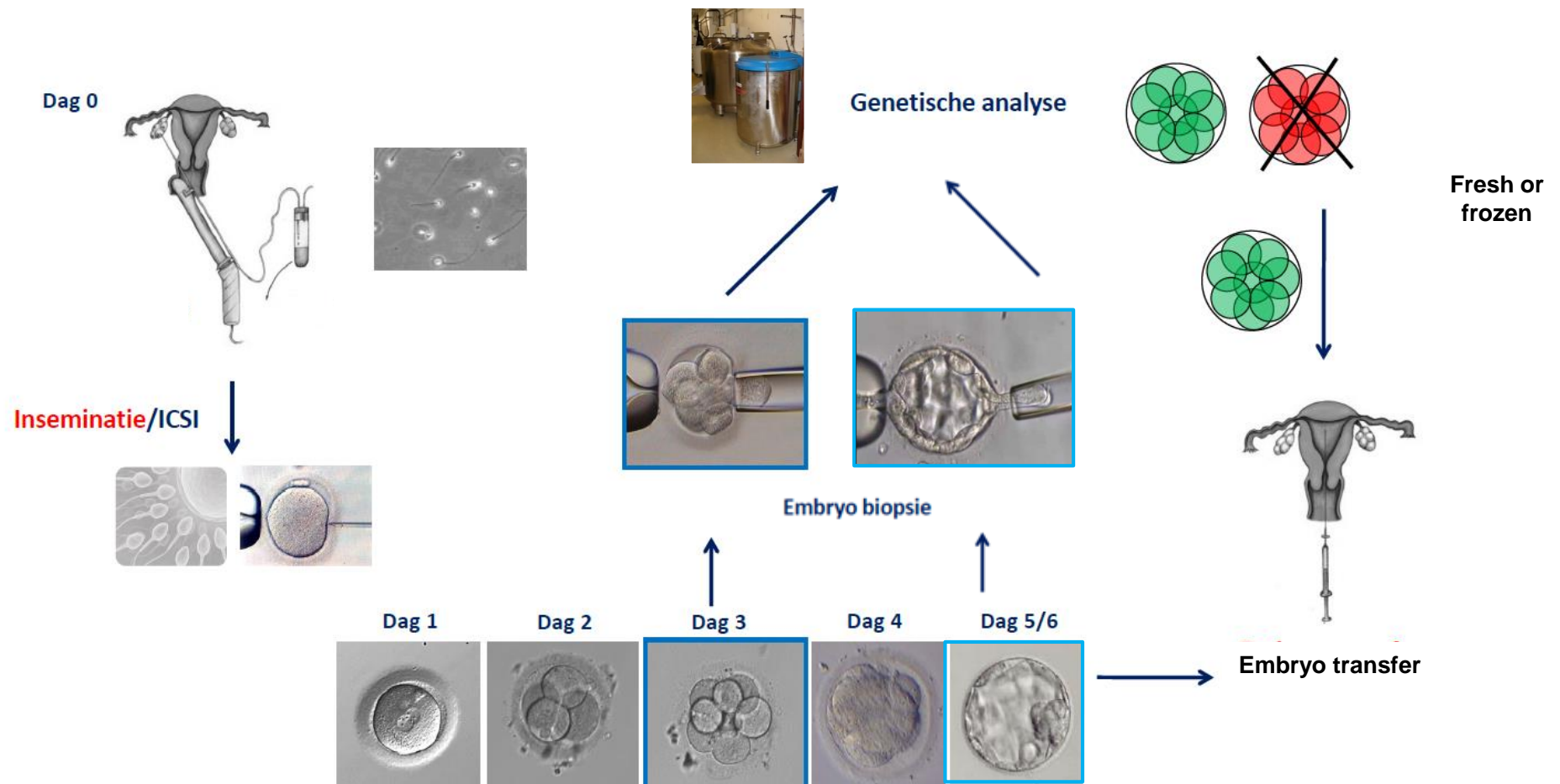


PGT: blastomere with normal diploid result for 2q and 16q



PGT: blastomere with loss of 2q and gain of 16q

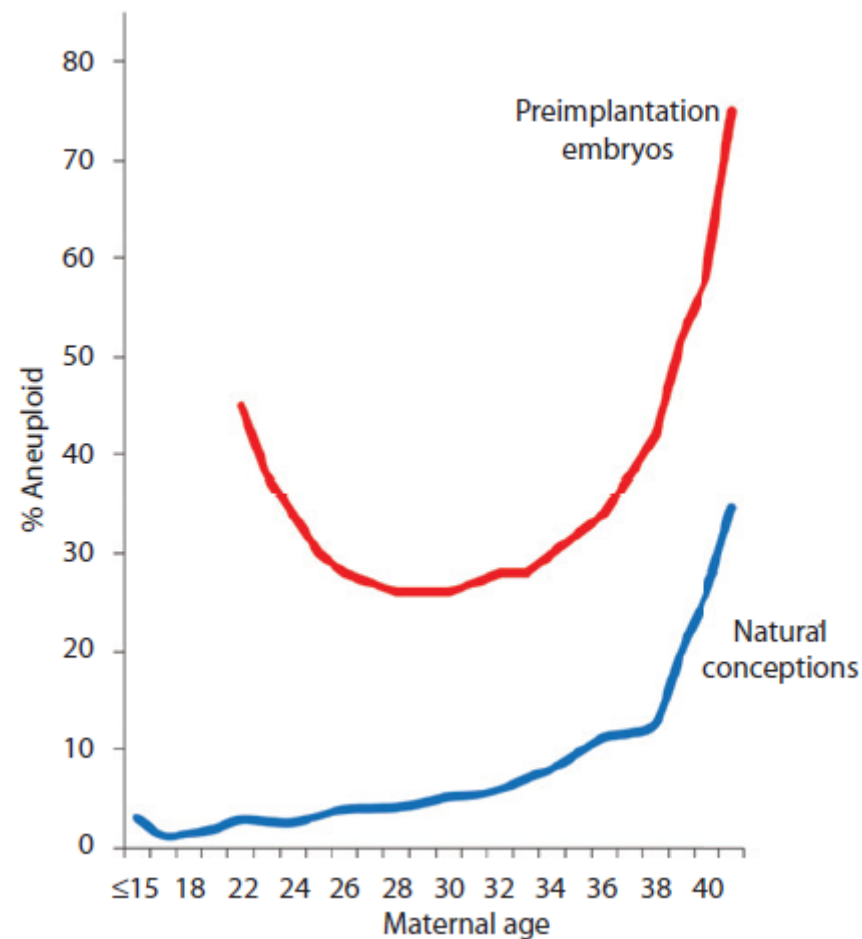
Schema: procedure PGT via FISH



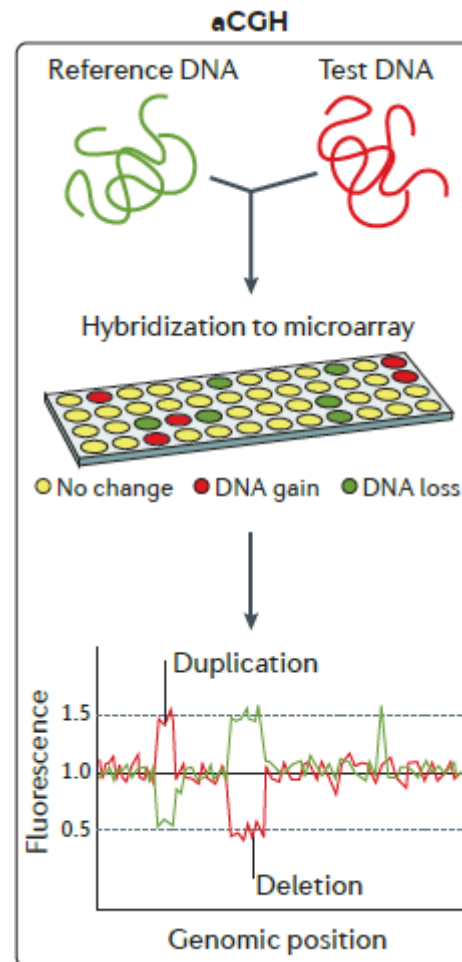
Pros and cons of PGT-SR via FISH

- + Suitable for detecting minor chromosomal abnormalities
- + Result available within 24h/48h
- Development of a family-specific test – pre-PGT optimisation necessary
- Restricted number of chromosomal regions can be ‘interrogated’ per experiment (~ availability of fluorochromes)
- In case of D3 biopsy, 2 cells for a reliable result (~ technical artifacts)
- GW view missing: no information on other chromosomes / possible aneuploidies

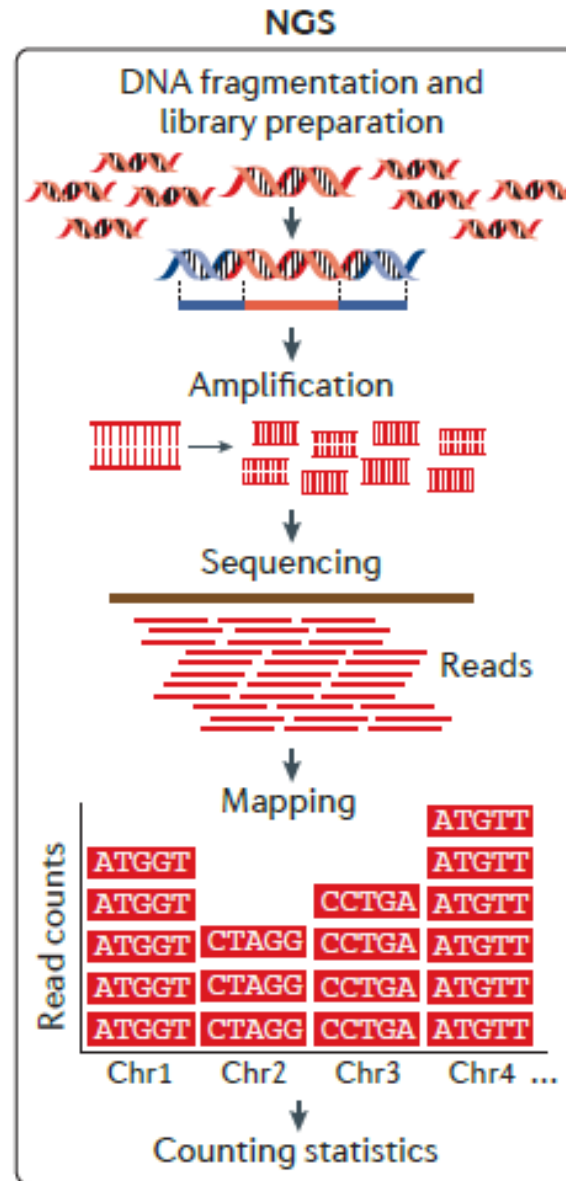
Risk on aneuploidy increases with maternal age

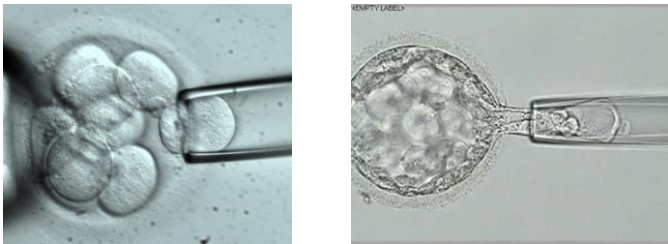


Array CGH



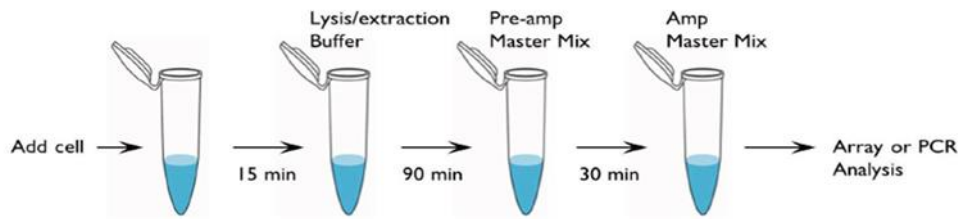
Low pass short read sequencing



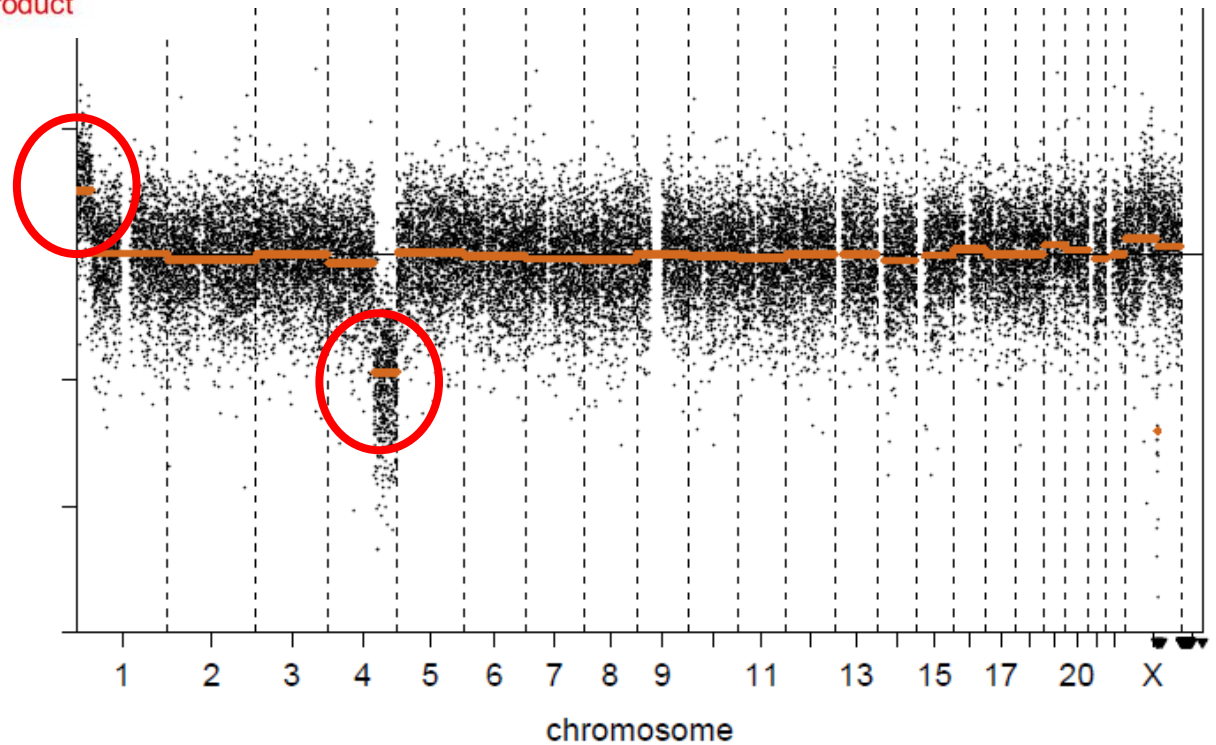


PGT-SR via LPS

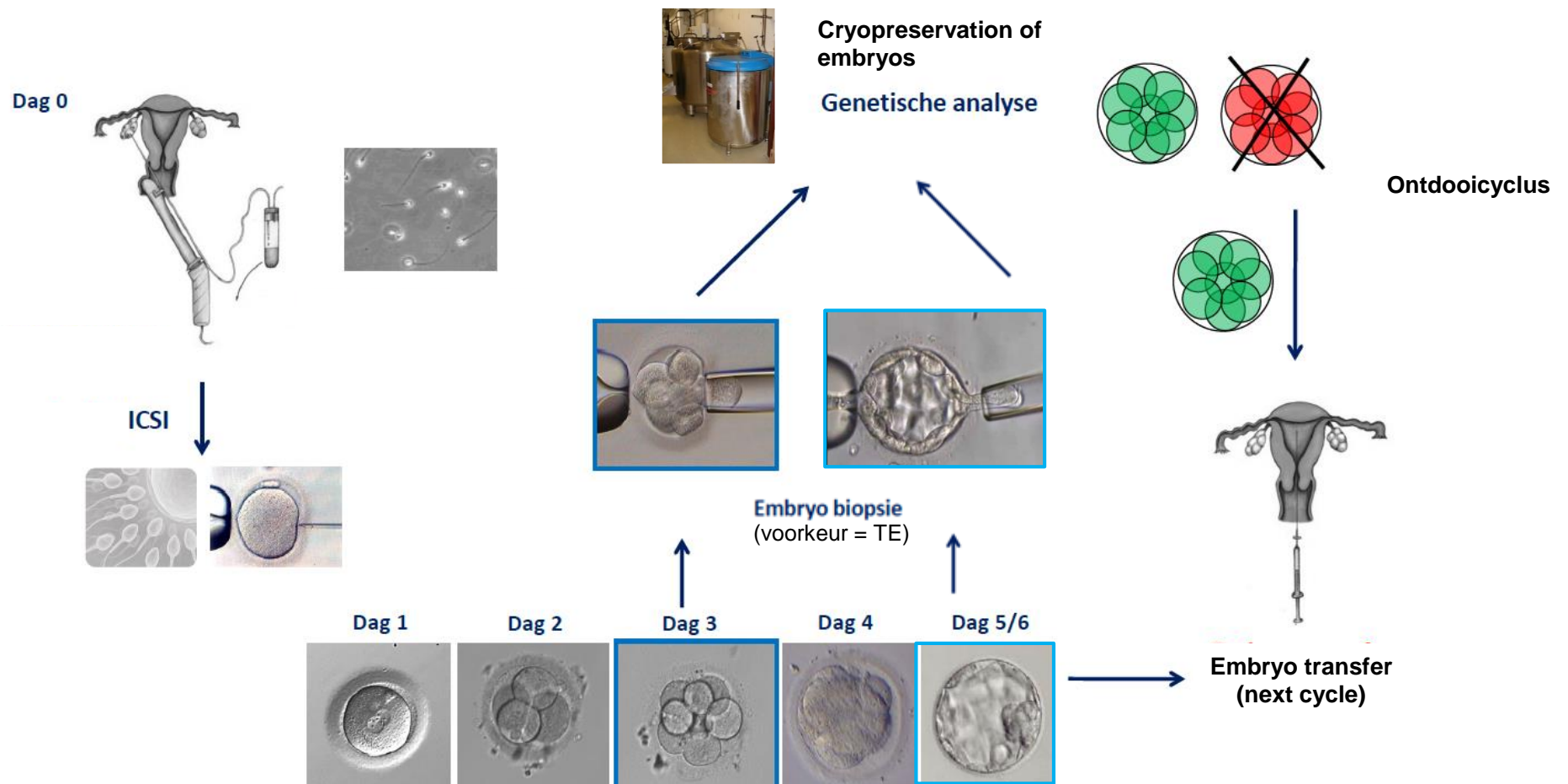
e.g. reciprocal translocations



7pg DNA (1 blastomere) $\xrightarrow{\text{WGA}}$ 30µg PCR product



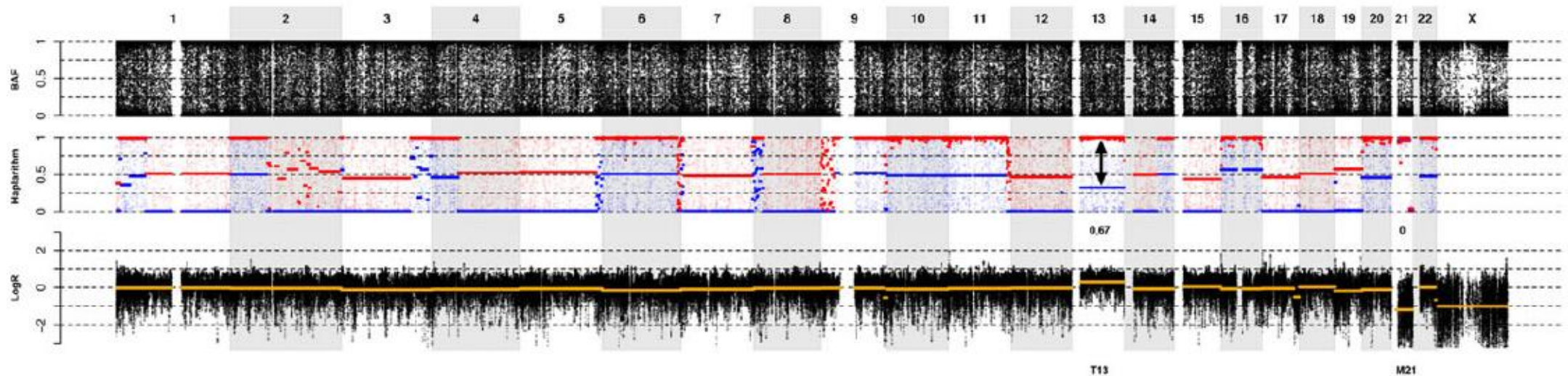
Scheme: PGT-SR via LPS



Pros and cons PGT-SR via LPS

- + Detection of unbalanced products
- + No need for the development/optimisation of family specific tests
- + No limitation regarding the number of chromosomal regions that can be tested
- + Genome-wide CN information available (+/-)
- + High throughput
- WGA required
- Detection limit depends on biopsy type and specific platform/pipeline
- Longer TAT
- No distinction between carriers of balanced translocations and non carriers
- cryopreservation of all embryos required

Genome-wide findings

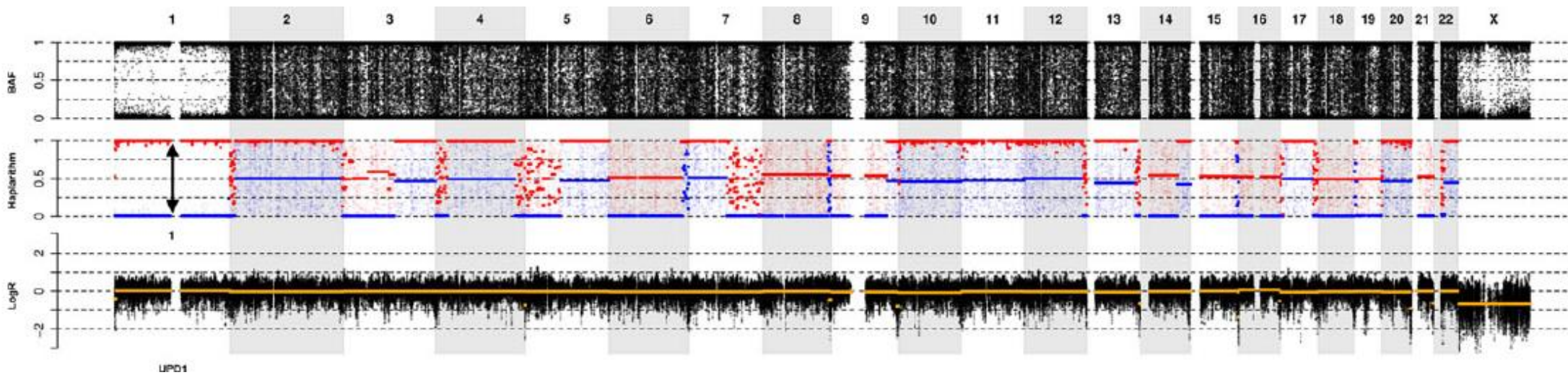


trisomie

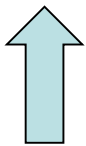


monosomie

Genome-wide findings

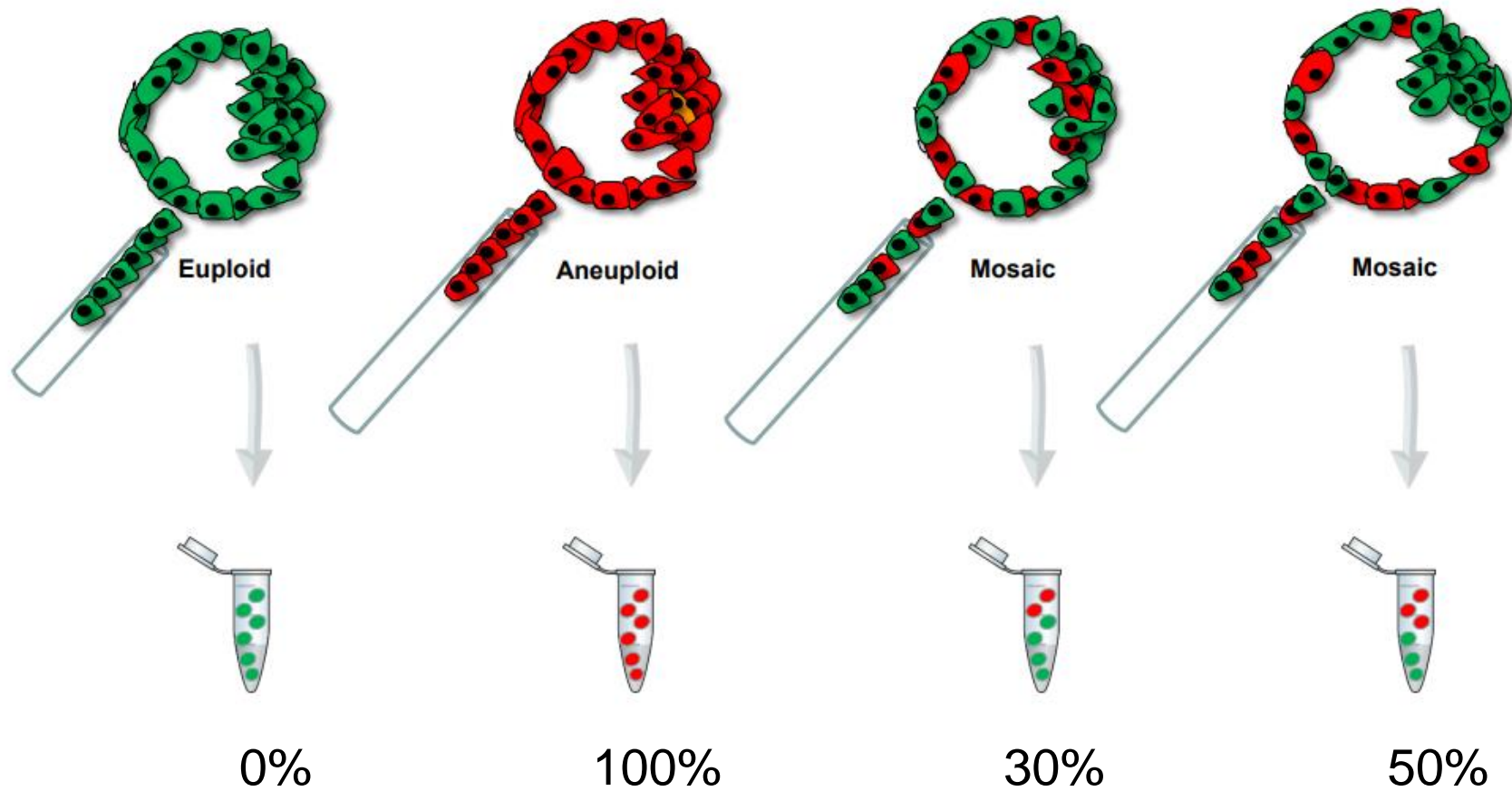


UPD1

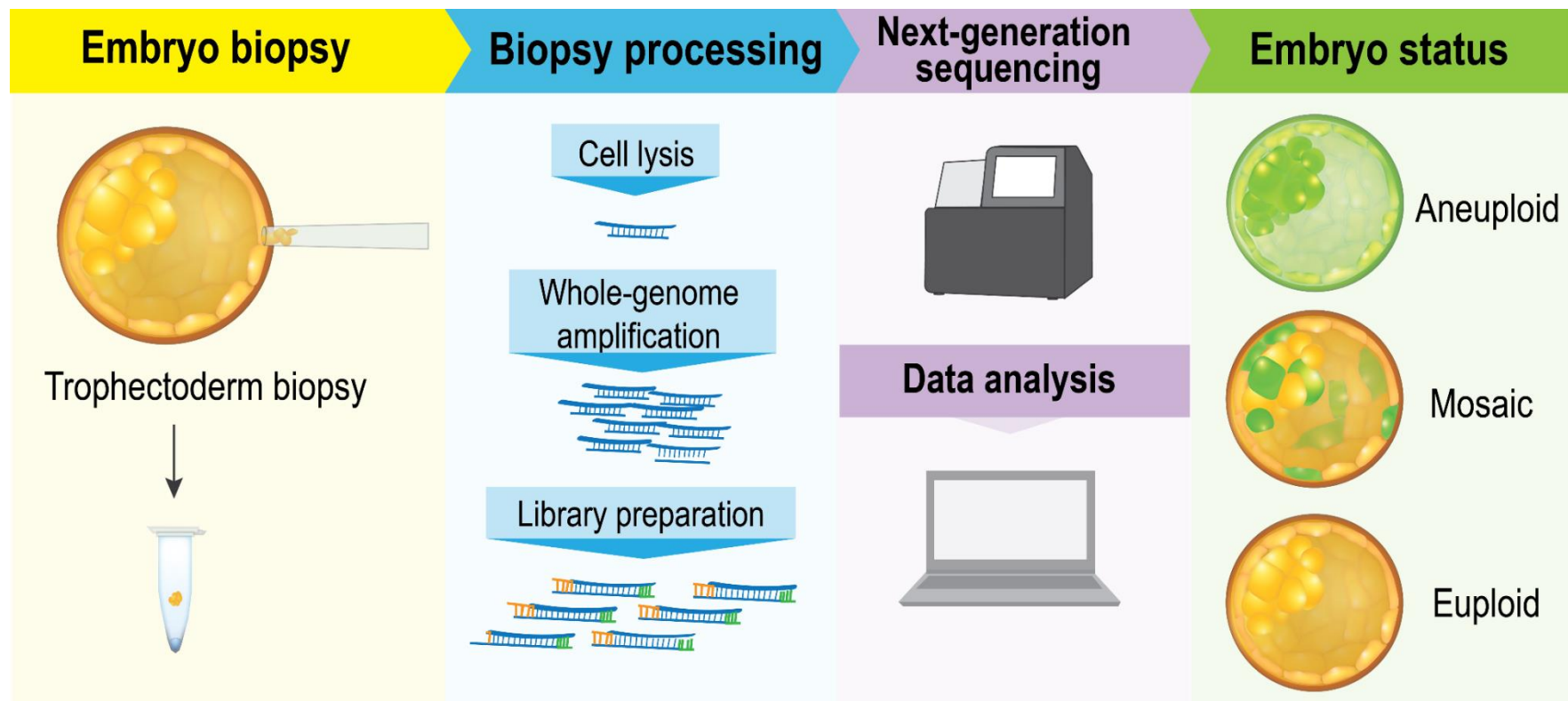


Uniparentele disomie

Mosaicism detection



PGT-A



PGT type

- PGT-SR
- PGT-M
- PGT-A
- Comprehensive PGT

Biopsy type

- Day 3 (blastomere)
- Day 5/6
(trophectoderm)

Techniques

- FISH
- PCR-based
- Low-pass short read sequencing
- SNP array-based
- Genotyping by sequencing

